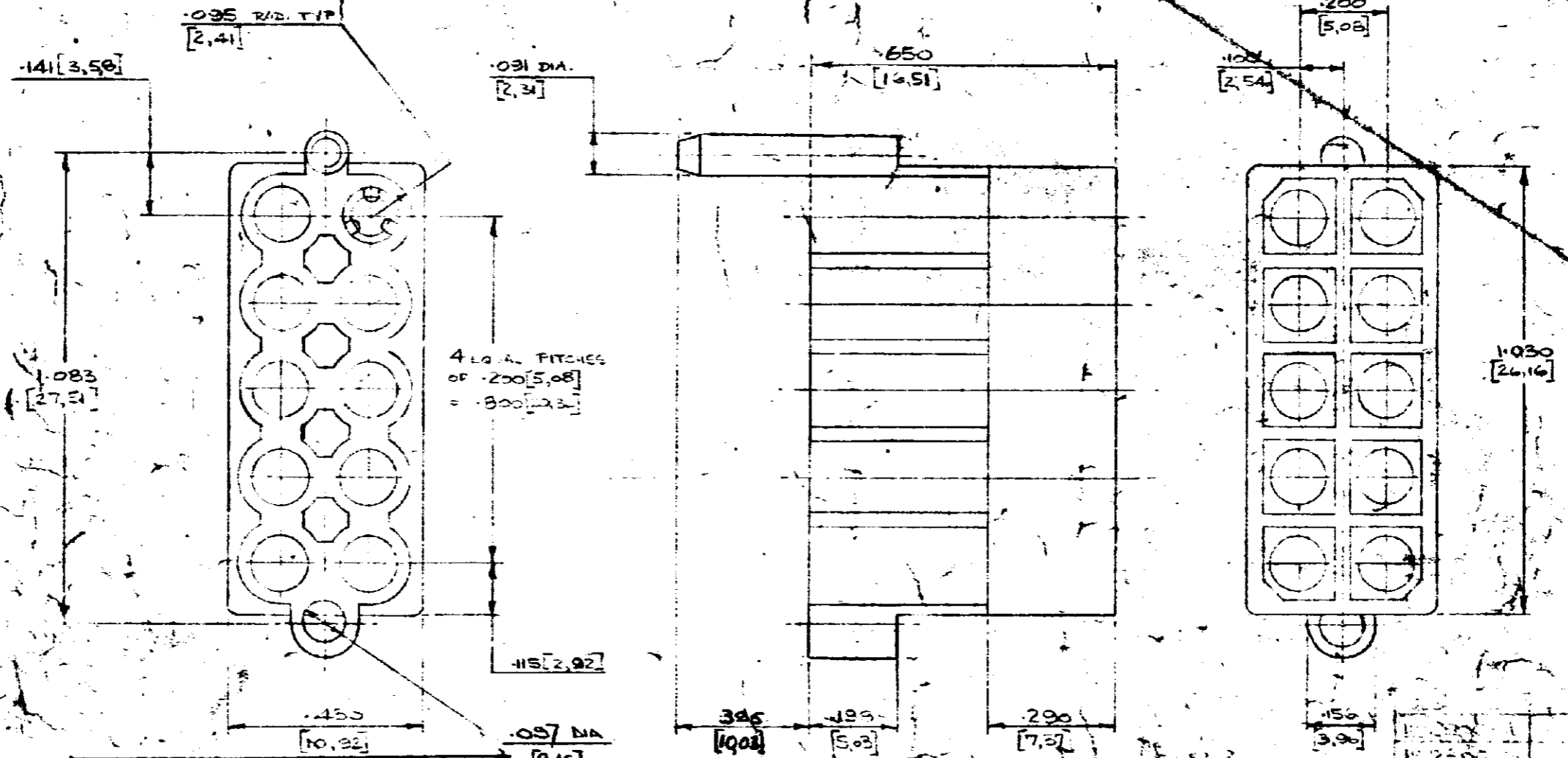


3/4 ANGLE (AMERICAN) PROJECTION

DIMENSIONS IN INCHES - DO NOT SCALE PRINT
DIMENSIONS THUS [] IN MM.

PART NUMBER 152306



NYLON 6.6	1-152306-4	GRAY
	1-152306-3	VIOLET
	1-152306-2	YELLOW
	1-152306-1	ORANGE
	1-152306-0	BROWN
	152306 - 9	RED
	152306 - 8	GREEN
	152306 - 7	BLUE
	152306 - 6	BLACK
	152306 - 5	NATURAL
MATERIAL	PART No.	FINISH

.057 DIA [1.46]

1	REVISED			
2				
3				
4	DESIGN NO. 510784 MARKED KS			
5	RELEASED FOR PRODUCTION			
6	REVISION RECORD	IDENTIFY CHG	DATE	
7				
8				
9				
10				

AMP AIRCRAFT-BORNE PRODUCTS (GREAT BRITAIN) LTD 1968

CUSTOMER COPY REFERENCE ONLY

AMP Industrial

A DIVISION OF AIRCRAFT-BORNE PRODUCTS (GREAT BRITAIN) LTD STAMFORD, ENGLAND

CLASS

TYPE

TOLERANCE EXCEPT WHERE SHOWN OTHERWISE

DATE 4-1

LOC B

NO 15-3

152306 SOCKET HOUSING FOR P.C. BOARD